



FITTING INSTRUCTIONS FOR UCP0004
UNDERBODY CRASH PROTECTORS
MV AGUSTA F4-R, RR 2010- MODELS

Page | 1



PICTURE 'A'



PICTURE 'B'

THIS KIT CONTAINS THE ITEMS PICTURED AND LABELLED BELOW.
DO NOT PROCEED UNTIL YOU ARE SURE ALL PARTS ARE PRESENT.

Please note that the way the kit is packed does not necessarily represent the way of mounting to the bike

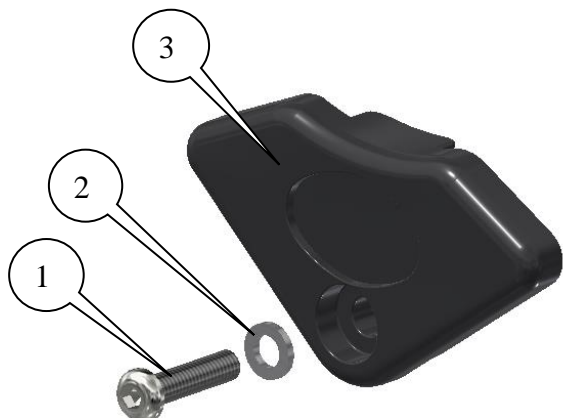
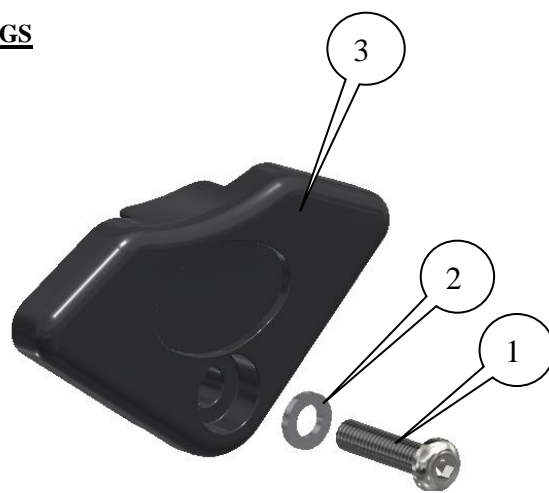
Please note that in cases where kits are packed with rubber washers holding the components onto the bolt – *the rubber washers should be thrown away!*

THE PARTS SHOWN MAY BE REPRESENTATIVE ONLY (FOR CLARITY OF INSTRUCTIONS ONLY)

Digital copies of these instructions are available to download from www.rg-racing.com

GENERAL TORQUE SETTINGS

M4 BOLT = 8Nm
M5 BOLT = 12Nm
M6 BOLT = 15Nm
M8 BOLT = 20Nm
M10 BOLT = 40Nm

LEFT HAND SIDE ASSEMBLYRIGHT HAND SIDE ASSEMBLY

R&G Racing

Unit 1 Shelleys Lane, East Worldham, Alton, Hants GU34 3AQ

Tel: +44 (0)1420 89007 Fax: +44 (0)1420 87301 www.rg-racing.com Email: info@rg-racing.com



TOOLS REQUIRED

- Hex drive bits or set of Allen keys to include 5mm A-F.

LEGEND

Page | 2

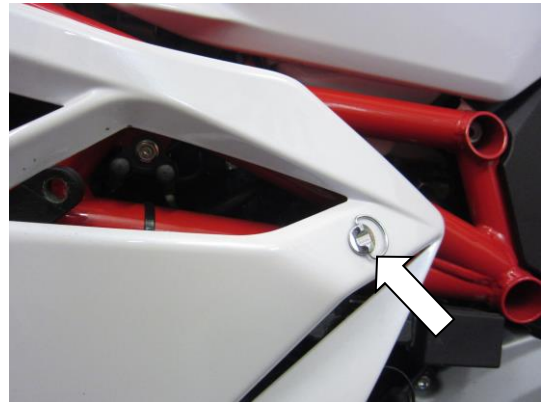
ITEM 1 = M7x25mm BUTTON HEAD BOLT, L&RHS (x2).

ITEM 2 = M7 WASHERS, L&RHS (x2).

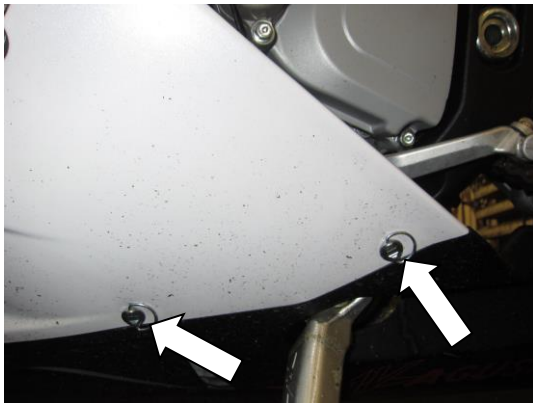
ITEM 3 = CRASH PROTECTORS, L&RHS (B0516) (x2).



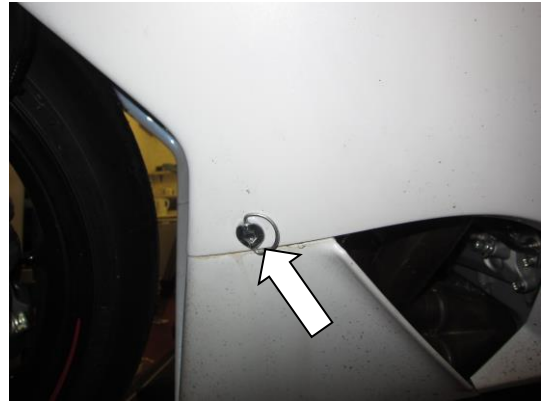
PICTURE 1



PICTURE 2



PICTURE 3

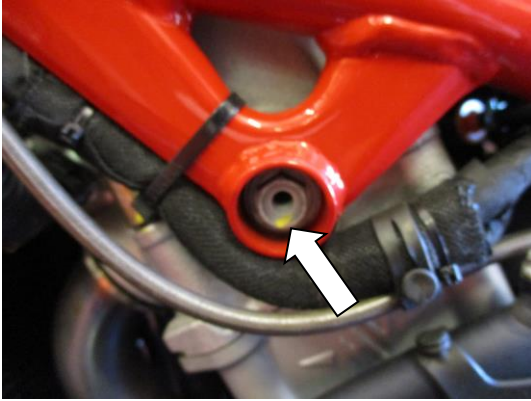


PICTURE 4

R&G Racing

Unit 1 Shelleys Lane, East Worldham, Alton, Hants GU34 3AQ

Tel: +44 (0)1420 89007 Fax: +44 (0)1420 87301 www.rg-racing.com Email: info@rg-racing.com



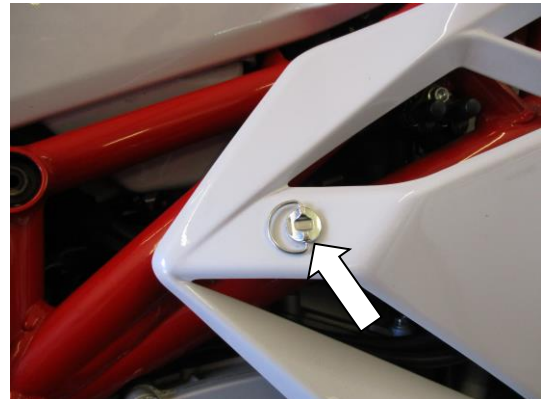
PICTURE 5



PICTURE 6



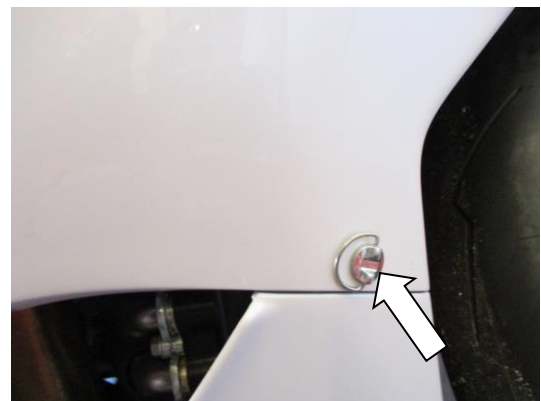
PICTURE 7



PICTURE 8



PICTURE 9

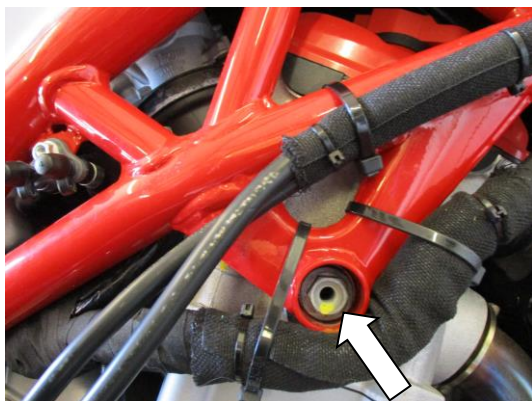


PICTURE 10

R&G Racing

Unit 1 Shelleys Lane, East Worldham, Alton, Hants GU34 3AQ

Tel: +44 (0)1420 89007 Fax: +44 (0)1420 87301 www.rg-racing.com Email: info@rg-racing.com



PICTURE 11



PICTURE 12

FITTING INSTRUCTIONS

Near side (left side as you sit on bike)

- Remove the seven quarter turn fasteners arrowed in pictures 1, 2, 3 and 4 and remove the left-hand side fairing.
- Place one of the M7 washers (item 2) onto one of the M7 bolts (item 1), then place the bolt with washer through one of the crash protectors (item 3) as shown in the left-hand side assembly picture.
- Offer this assembly into the thread in the engine bolt arrowed in picture 5.
- Tighten the bolt so the crash protector sits as shown in picture 6.
- If not already fitted, fit bubble sticker into recess of crash protector (item 3).
- Refit the fairing as original.

Off side (right side as you sit on bike)

- Remove the seven quarter turn fasteners arrowed in pictures 7, 8, 9 and 10 and remove the right-hand side fairing.
- Place one of the M7 washers (item 2) onto one of the M7 bolts (item 1), then place the bolt with washer through one of the crash protectors (item 3) as shown in the right-hand side assembly picture.
- Offer this assembly into the thread in the engine bolt arrowed in picture 11.
- Tighten the bolt so the crash protector sits as shown in picture 12.
- If not already fitted, fit bubble sticker into recess of crash protector (item 3).
- Refit the fairing as original.

Issue 1 26/07/2017 (NSY)

CONSUMER NOTICE

The catalogue description and any exhibition of samples are only broad indications of the Products and R&G may make design changes which do not diminish their performance or visual appeal and supplying them in such state shall conform to the order. The Buyer acknowledges no representation or warranty (other than as to title) has been given or will apply to the Products other than those in R&G's

R&G Racing

Unit 1 Shelleys Lane, East Worldham, Alton, Hants GU34 3AQ

Tel: +44 (0)1420 89007 Fax: +44 (0)1420 87301 www.rg-racing.com Email: info@rg-racing.com



order or confirmation and the Buyer confirms it has chosen the Products as being of merchantable quality and suitable for its particular purposes. Where R&G fits the Products or undertakes other services it shall exercise reasonable skill and care and rectify any fault free of charge unless the workmanship has been disturbed. The Buyer is responsible for ensuring that the warranty on the motorcycle is not affected by the fitting of the Products. On return of any defective Products R&G shall at its option either supply a replacement or refund the purchase money but shall not be liable if the Products have been modified or used or maintained otherwise than in accordance with R&G's or manufacturer's instructions and good engineering practice or if the defect arises from accident or neglect. Other than identified above and subject to R&G not limiting its liability for causing death and personal injury, it shall not be liable for indirect or consequential loss and otherwise its liability shall be limited to the amounts paid by the Buyer for the Products or the fitting or service concerned. These terms do not affect the Buyer's statutory rights.

R&G RACING RETURNS POLICY (NON-FAULTY GOODS)

Returns must be pre-authorized (if not pre-authorized the return will be rejected). Goods may only be returned direct to us if they were purchased direct from us (customer must prove if necessary). Otherwise to be returned to original vendor. Goods must be in re-sellable condition, in the opinion of R&G Racing. All returns are subject to a 25% restocking and handling fee (25% of the gross value exc. P&P – at the prevailing price at time of purchase). The customer must pay any and all carriage charges. No returns of discontinued products, unless within 14 days of purchase. This policy does not affect your statutory rights and does not refer to faulty goods.

R&G Racing

Unit 1 Shelleys Lane, East Worldham, Alton, Hants GU34 3AQ

Tel: +44 (0)1420 89007 Fax: +44 (0)1420 87301 www.rg-racing.com Email: info@rg-racing.com



NOTICE DE MONTAGE POUR UCP0004
PROTECTION CRASH
MV AGUSTA F4-R, RR 2010- MODELS

Page | 6



PHOTO 'A'



PHOTO 'B'

Le kit contient les articles exposés ci-dessous, vérifier que toutes les pièces soient présentes avant de procéder au montage.

La façon dont le kit est emballé ne correspond pas forcément à la façon de monter les pièces sur la moto.

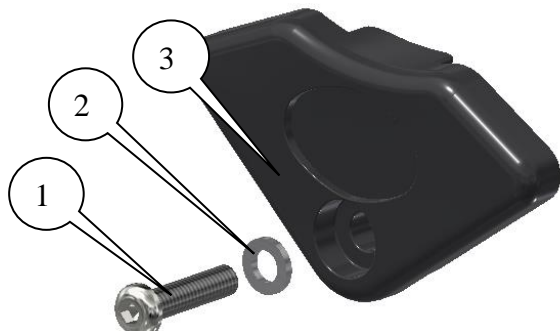
Notez que si les kits sont emballés avec des rondelles en caoutchouc servant à tenir les composants, *ces rondelles doivent être jetées !*

LES PARTIES PRESENTEES PEUVENT ETRE UNIQUEMENT REPRESENTATIVES (POUR LA CLARTE DES INSTRUCTIONS UNIQUEMENT

Notice disponible au téléchargement sur www.rg-racing.com

VALEURS DE SERRAGE RECOMMANDEES

M4 BOULON = 8Nm
M5 BOULON = 12Nm
M6 BOULON = 15Nm
M8 BOULON = 20Nm
M10 BOULON = 40Nm

ASSEMBLAGE CÔTÉ GAUCHEASSEMBLAGE CÔTÉ DROIT

R&G Racing

Unit 1 Shelleys Lane, East Worldham, Alton, Hants GU34 3AQ

Tel: +44 (0)1420 89007 Fax: +44 (0)1420 87301 www.rg-racing.com Email: info@rg-racing.com



OUTILS REQUIS

- Clés Allen incluant une clé de 5mm.

LEGENDE

Page | 7

ARTICLE 1 = M7x25mm BOULON, CÔTÉ GAUCHE ET DROIT (x2).

ARTICLE 2 = M7 RONDELLES, CÔTÉ GAUCHE ET DROIT (x2).

ARTICLE 3 = PROTECTIONS CRASH, CÔTÉ GAUCHE ET DROIT (B0516) (x2).



PHOTO 1

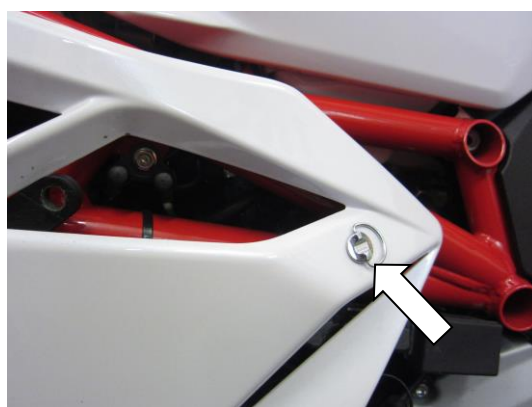


PHOTO 2

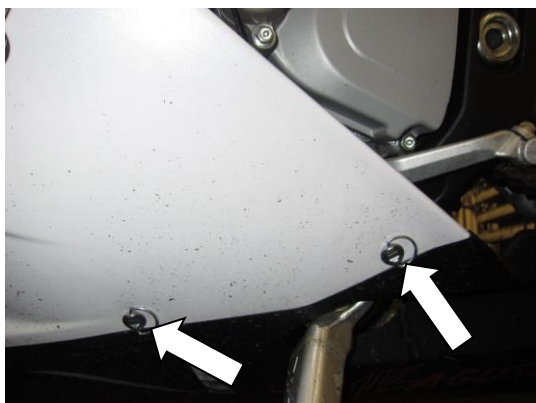


PHOTO 3



PHOTO 4

R&G Racing

Unit 1 Shelleys Lane, East Worldham, Alton, Hants GU34 3AQ

Tel: +44 (0)1420 89007 Fax: +44 (0)1420 87301 www.rg-racing.com Email: info@rg-racing.com

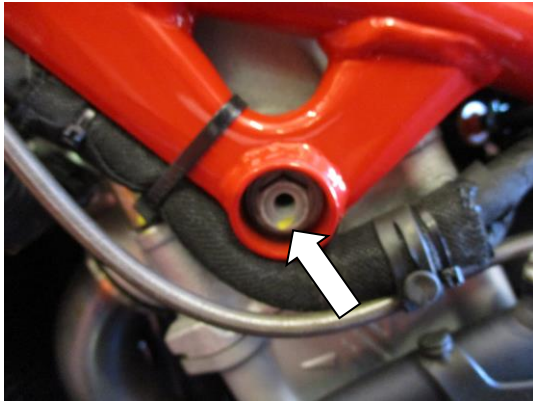


PHOTO 5



PHOTO 6



PHOTO 7



PHOTO 8



PHOTO 9

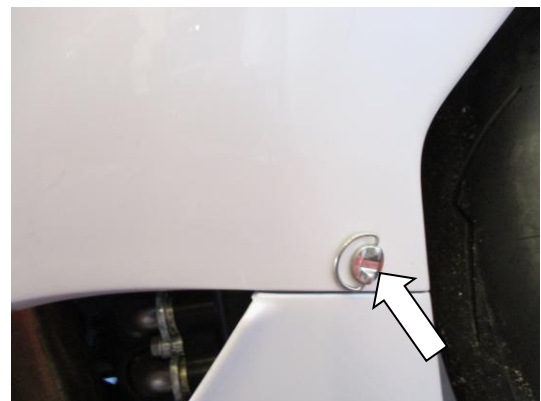


PHOTO 10

R&G Racing

Unit 1 Shelleys Lane, East Worldham, Alton, Hants GU34 3AQ

Tel: +44 (0)1420 89007 Fax: +44 (0)1420 87301 www.rg-racing.com Email: info@rg-racing.com

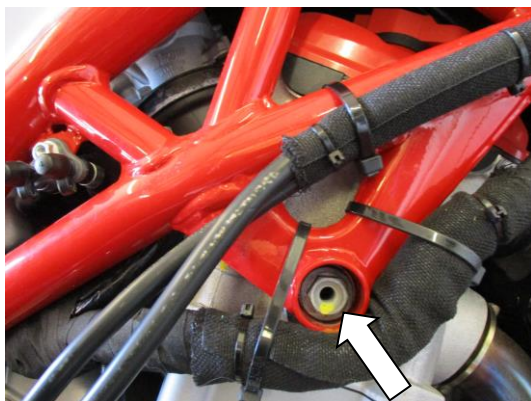


PHOTO 11



PHOTO 12

NOTICE DE MONTAGE

Côté gauche (lorsqu'on est assis sur la moto)

- Enlever les 7 attaches rapides visibles sur les photos 1, 2, 3 et 4 et enlever le carénage gauche.
- Placer une des rondelles M7 (article 2) sur un des boulons M7 (article 1), puis placez le boulon avec la rondelle dans l'une des protections crash (article 3), voir la photo de l'assemblage du côté gauche.
- Monter l'ensemble sur le filetage du boulon moteur visible sur la photo 5.
- Serrer le boulon de façon à ce que la protection crash se place comme indiqué sur la photo 6.
- Si cela n'est pas déjà fait, insérer le sticker en caoutchouc dans le creux de la protection crash (article 3).
- Remonter le carénage comme à l'origine.

Côté droit (lorsqu'on est assis sur la moto)

- Enlever les 7 attaches rapides visibles sur les photos 7, 8, 9 et 10 puis enlever le carénage droit.
- Placer une des rondelles M7 (article 2) sur un des boulons M7 (article 1), puis placez le boulon avec la rondelle dans l'une des protections crash (article 3), voir la photo de l'assemblage du côté droit.
- Monter l'ensemble sur le filetage du boulon moteur visible sur la photo 11.
- Serrer le boulon de façon à ce que la protection crash se place comme indiqué sur la photo 12.
- Si cela n'est pas déjà fait, insérer le sticker en caoutchouc dans le creux de la protection crash (article 3).
- Remonter le carénage comme à l'origine.

Issue 1 26/07/2017 (NSY)

CONSUMER NOTICE

The catalogue description and any exhibition of samples are only broad indications of the Products and R&G may make design changes which do not diminish their performance or visual appeal and supplying them in such state shall conform to the order. The Buyer acknowledges no representation or warranty (other than as to title) has been given or will apply to the Products other than those in R&G's

R&G Racing

Unit 1 Shelleys Lane, East Worldham, Alton, Hants GU34 3AQ

Tel: +44 (0)1420 89007 Fax: +44 (0)1420 87301 www.rg-racing.com Email: info@rg-racing.com



order or confirmation and the Buyer confirms it has chosen the Products as being of merchantable quality and suitable for its particular purposes. Where R&G fits the Products or undertakes other services it shall exercise reasonable skill and care and rectify any fault free of charge unless the workmanship has been disturbed. The Buyer is responsible for ensuring that the warranty on the motorcycle is not affected by the fitting of the Products. On return of any defective Products R&G shall at its option either supply a replacement or refund the purchase money but shall not be liable if the Products have been modified or used or maintained otherwise than in accordance with R&G's or manufacturer's instructions and good engineering practice or if the defect arises from accident or neglect. Other than identified above and subject to R&G not limiting its liability for causing death and personal injury, it shall not be liable for indirect or consequential loss and otherwise its liability shall be limited to the amounts paid by the Buyer for the Products or the fitting or service concerned. These terms do not affect the Buyer's statutory rights.

R&G RACING RETURNS POLICY (NON-FAULTY GOODS)

Returns must be pre-authorised (if not pre-authorised the return will be rejected). Goods may only be returned direct to us if they were purchased direct from us (customer must prove if necessary). Otherwise to be returned to original vendor. Goods must be in re-sellable condition, in the opinion of R&G Racing. All returns are subject to a 25% restocking and handling fee (25% of the gross value exc. P&P – at the prevailing price at time of purchase). The customer must pay any and all carriage charges. No returns of discontinued products, unless within 14 days of purchase. This policy does not affect your statutory rights and does not refer to faulty goods.

R&G Racing

Unit 1 Shelleys Lane, East Worldham, Alton, Hants GU34 3AQ

Tel: +44 (0)1420 89007 Fax: +44 (0)1420 87301 www.rg-racing.com Email: info@rg-racing.com